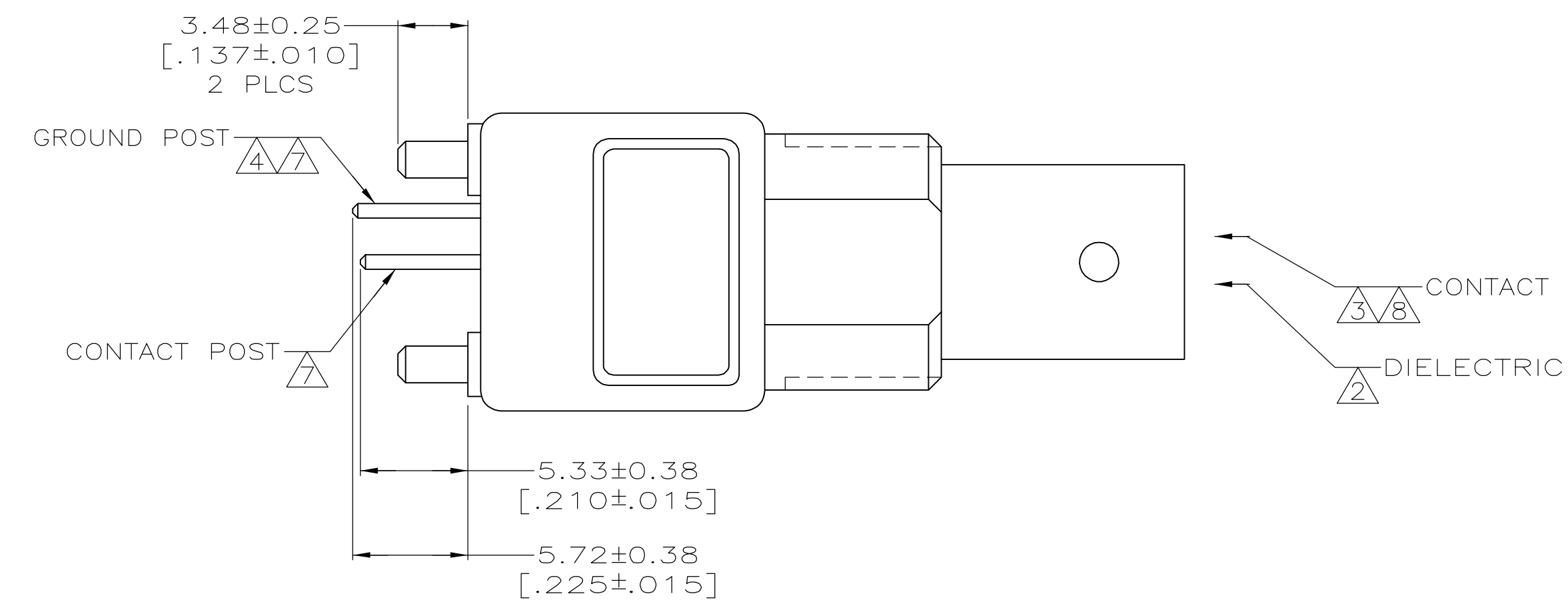
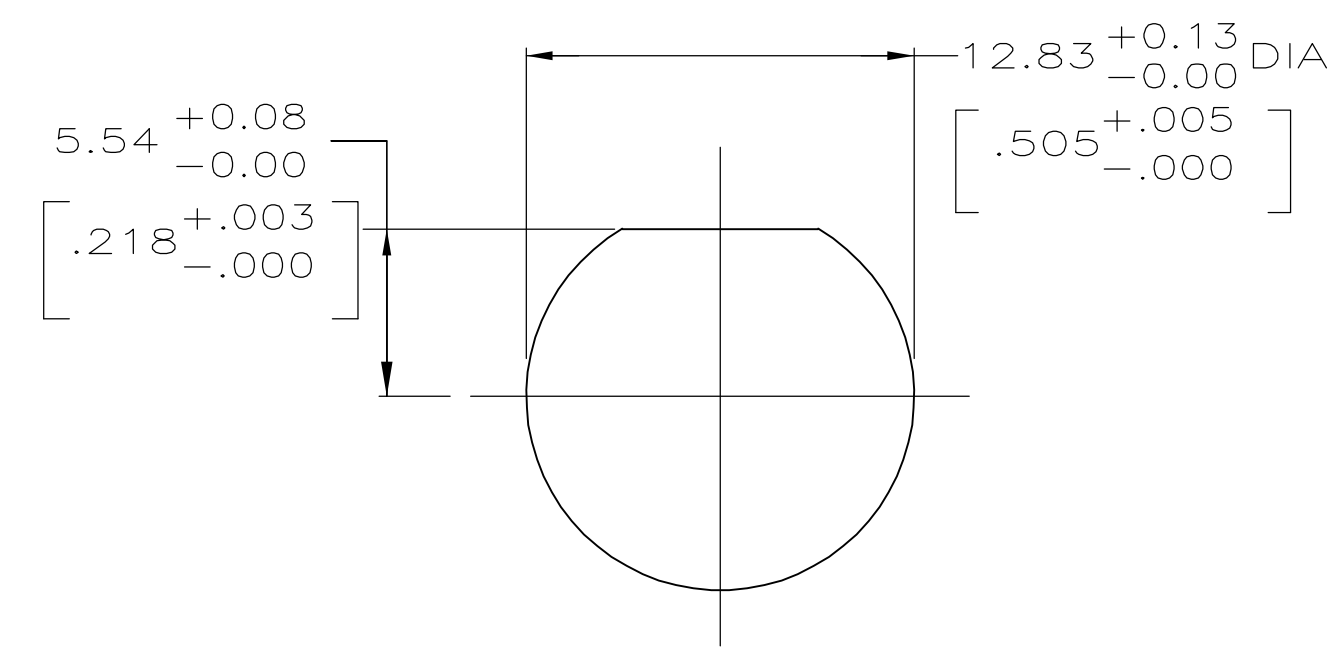
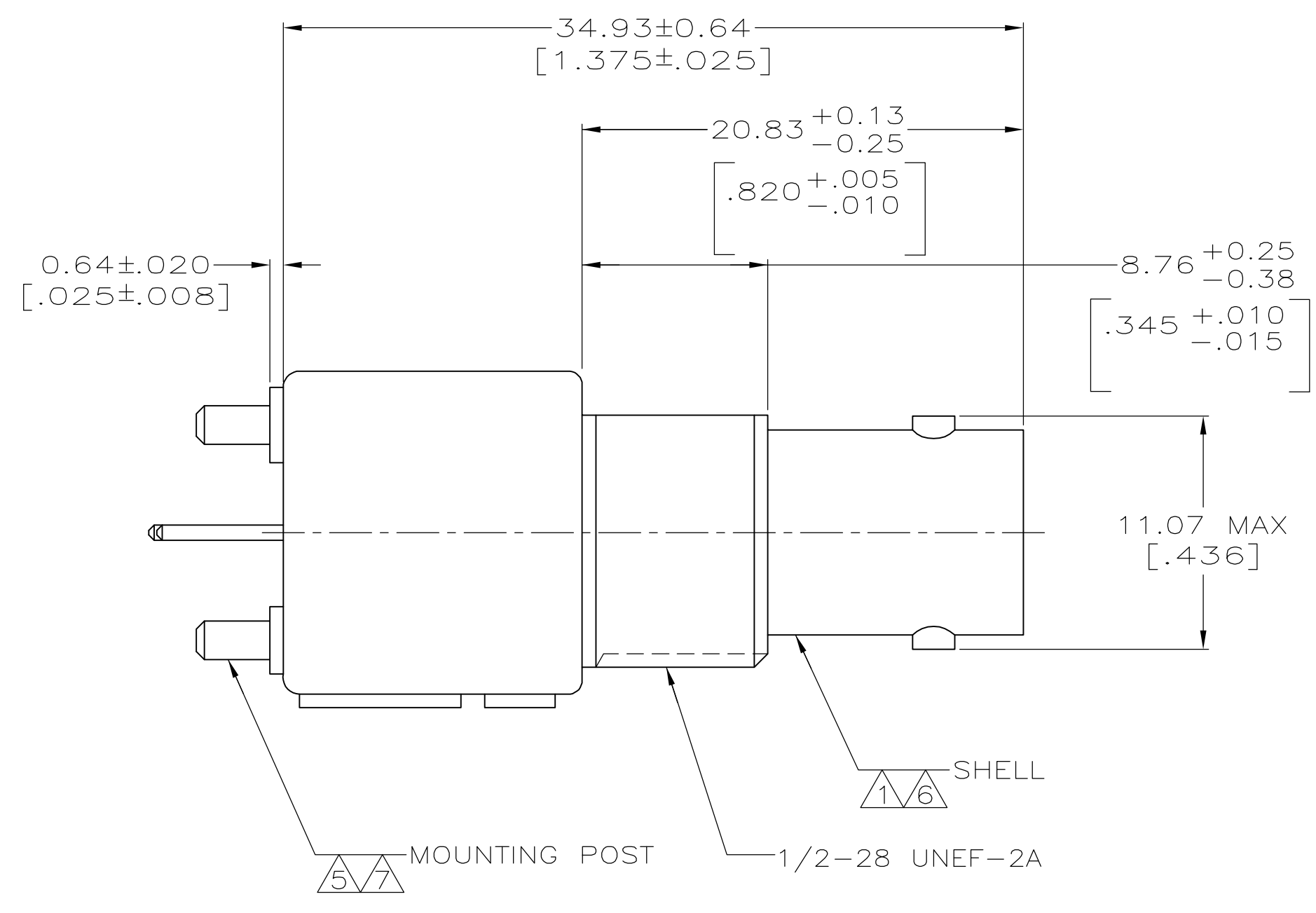
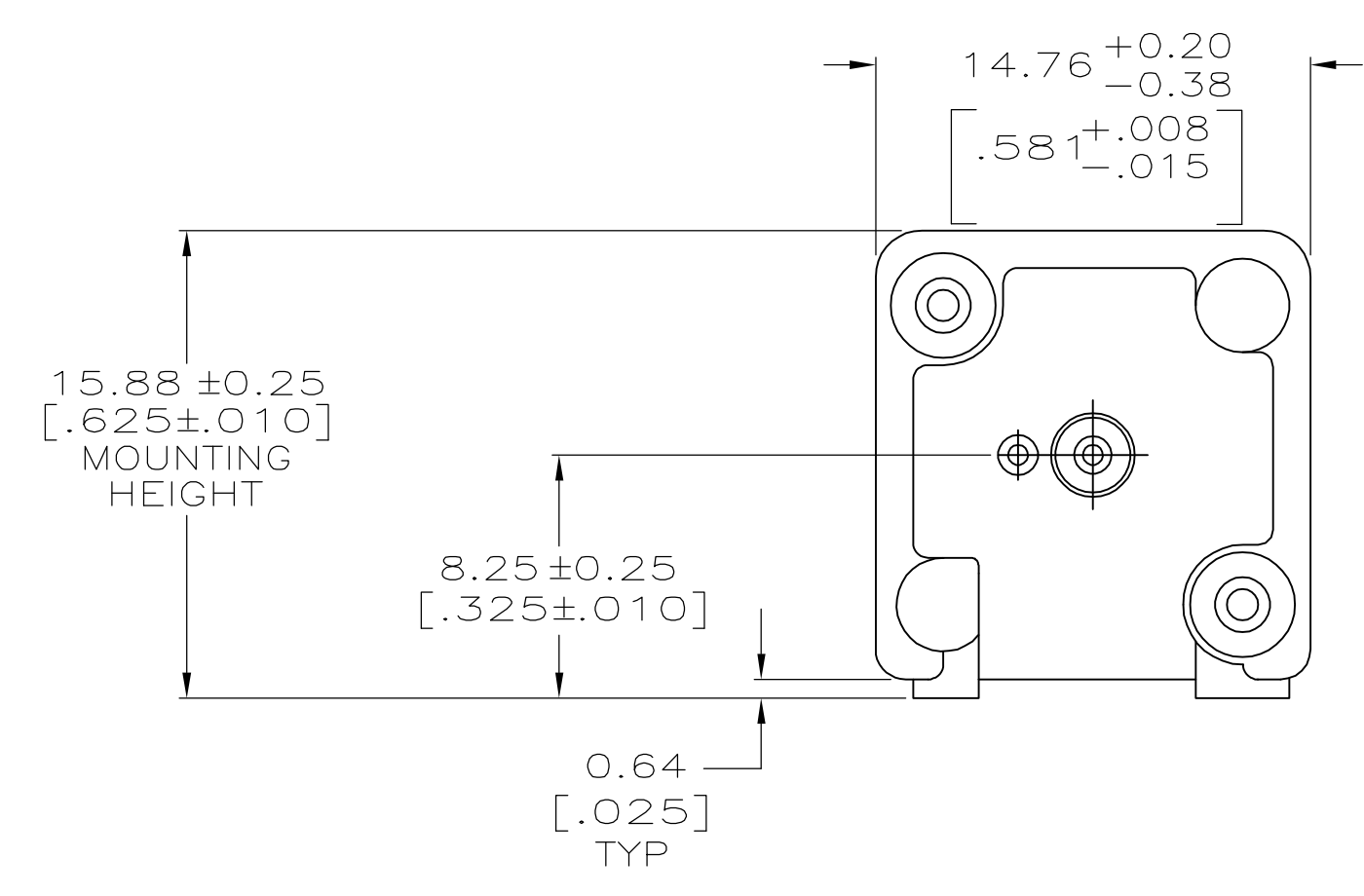


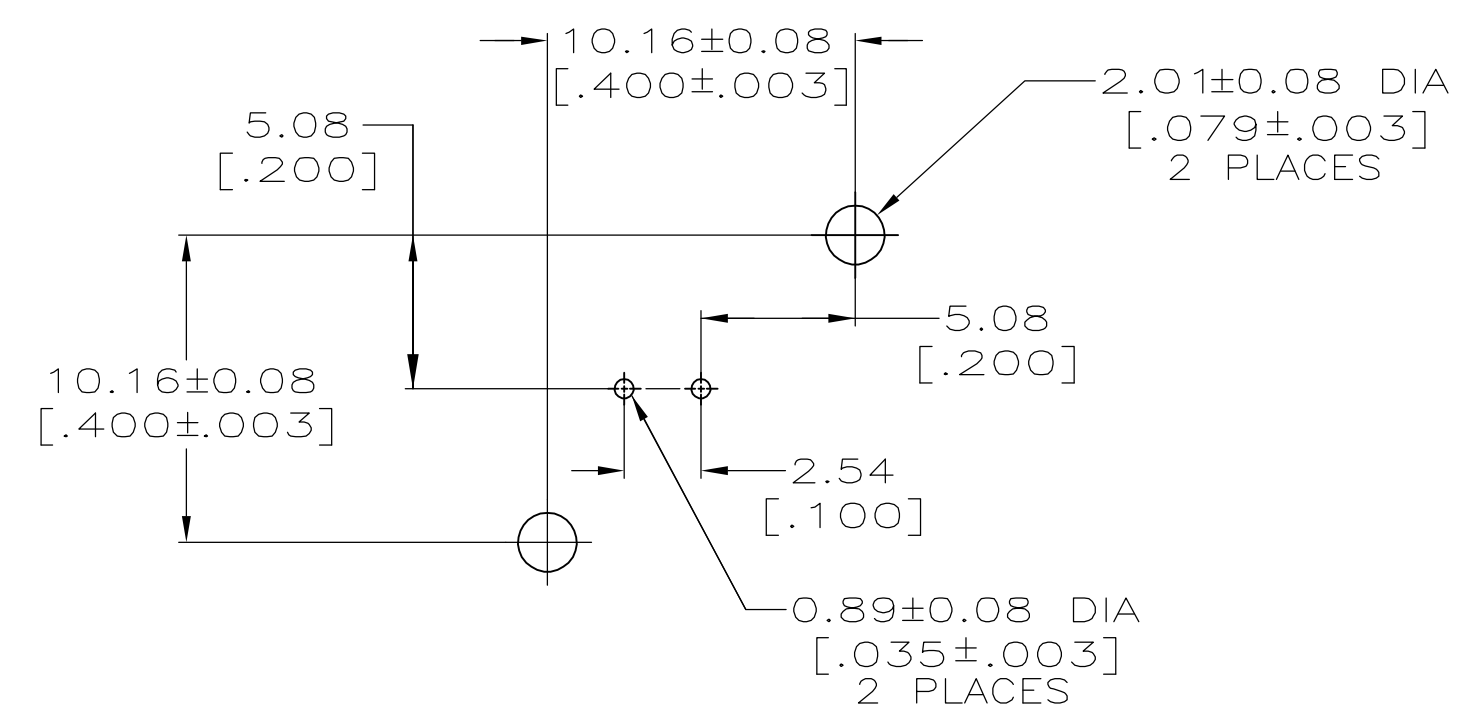
LOC		DIST		REVISIONS			
P	LTR	DESCRIPTION	DATE	OWN	APVD		
D		PER EC 0514-0184-04	10JAN05	BM	JL		



- 1 ZINC PER QQ-Z-363.
- 2 POLYMETHYLPENTENE PER ASTM-D-1238.
- 3 PHOSPHOR BRONZE PER QQ-B-750.
- 4 BRASS PER ASTM-B-453.
- 5 BRASS PER ASTM-B-16.
- 6 NICKEL PLATE PER QQ-N-290, 3.81 μm [.000150] MINIMUM THICK.
- 7 TIN PLATE PER ASTM-B-545, 3.81 μm [.000150] MINIMUM THICK.
- 8 GOLD PLATE PER MIL-G-45204, 0.76 μm [.000030] MINIMUM THICK.
- 9. SEE INSTRUCTION SHEET 2769.



RECOMMENDED PANEL CUTOUT



PCB CONFIGURATION

227673-1  
 PART NUMBER

THIS DRAWING IS A CONTROLLED DOCUMENT.		DIN J. LIPPERT 6-30-92		Tyco Electronics Corporation	
DIMENSIONS: INCHES		CIK A. GABANY 7-2-92		Harrisburg, PA 17105-3608	
	TOLERANCES UNLESS OTHERWISE SPECIFIED:	APVD A. GABANY 7-2-92	NAME	JACK, VERTICAL, PCB, 50 OHM, SERIES BNC	
	0 PLC ± -	PRODUCT SPEC	108-12078	SIZE	CAGE CODE DRAWING NO
1 PLC ± -	APPLICATION SPEC	—	RESTRICTED TO	—	
2 PLC ± 0.05 [.002]	—	—	WEIGHT	A1 00779 C=227673	
3 PLC ± -	—	—	CUSTOMER DRAWING	SCALE	4:1
4 PLC ± -	—	—	—	SHEET	1 OF 1
ANGLES ± -	—	—	—	REV	D
FINISH SEE NOTES 6-8	—	—	—	—	—